



British Energy

Robin Wilson

Year in Industry: My Story



Before

The Year
in Industry
EDT

British Energy 



After

The Year
in Industry
EDT

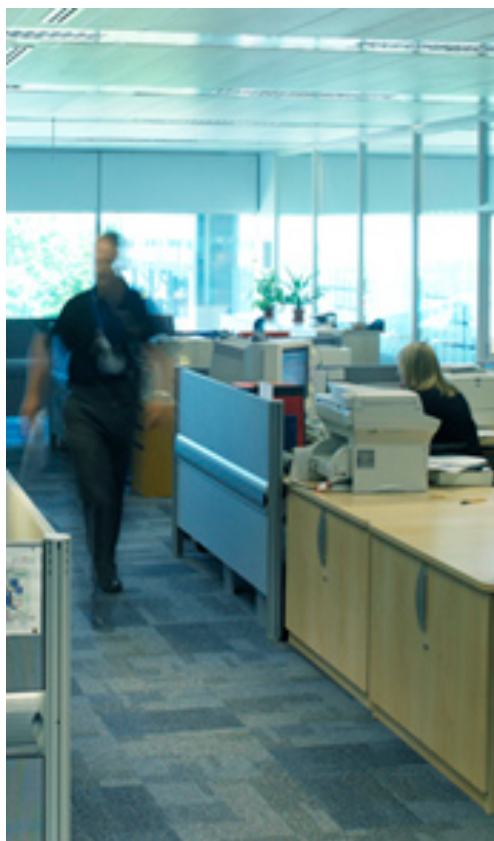
British Energy 



University
of Southampton

UNIVERSITY OF
Southampton
School of Geography

The bit in the middle...YINI



What?



Sizewell B Nuclear Power Station

What?



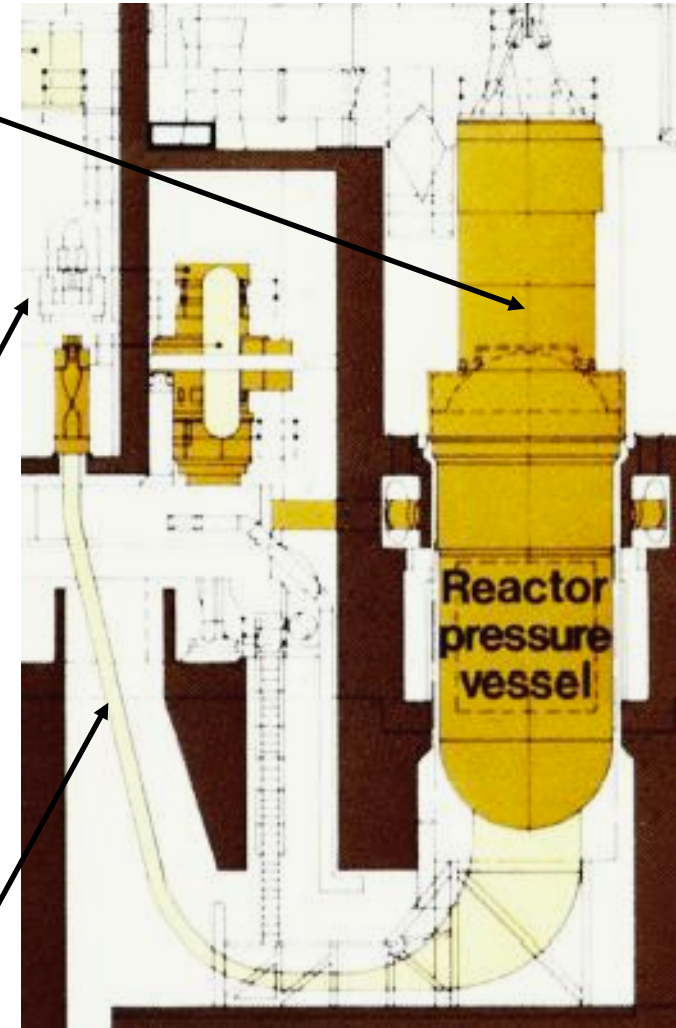
What?



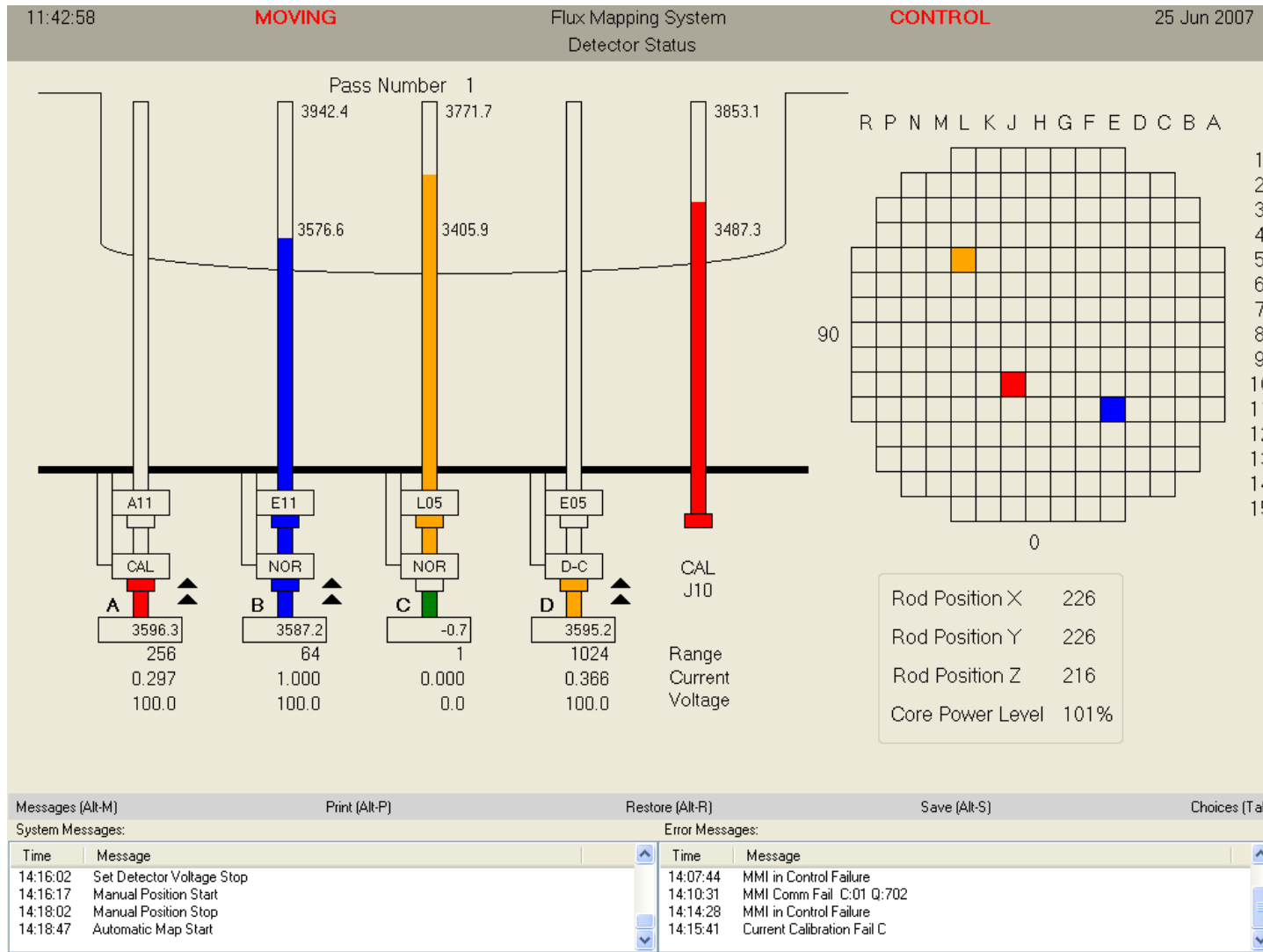
Control Rods

Detector Drive System

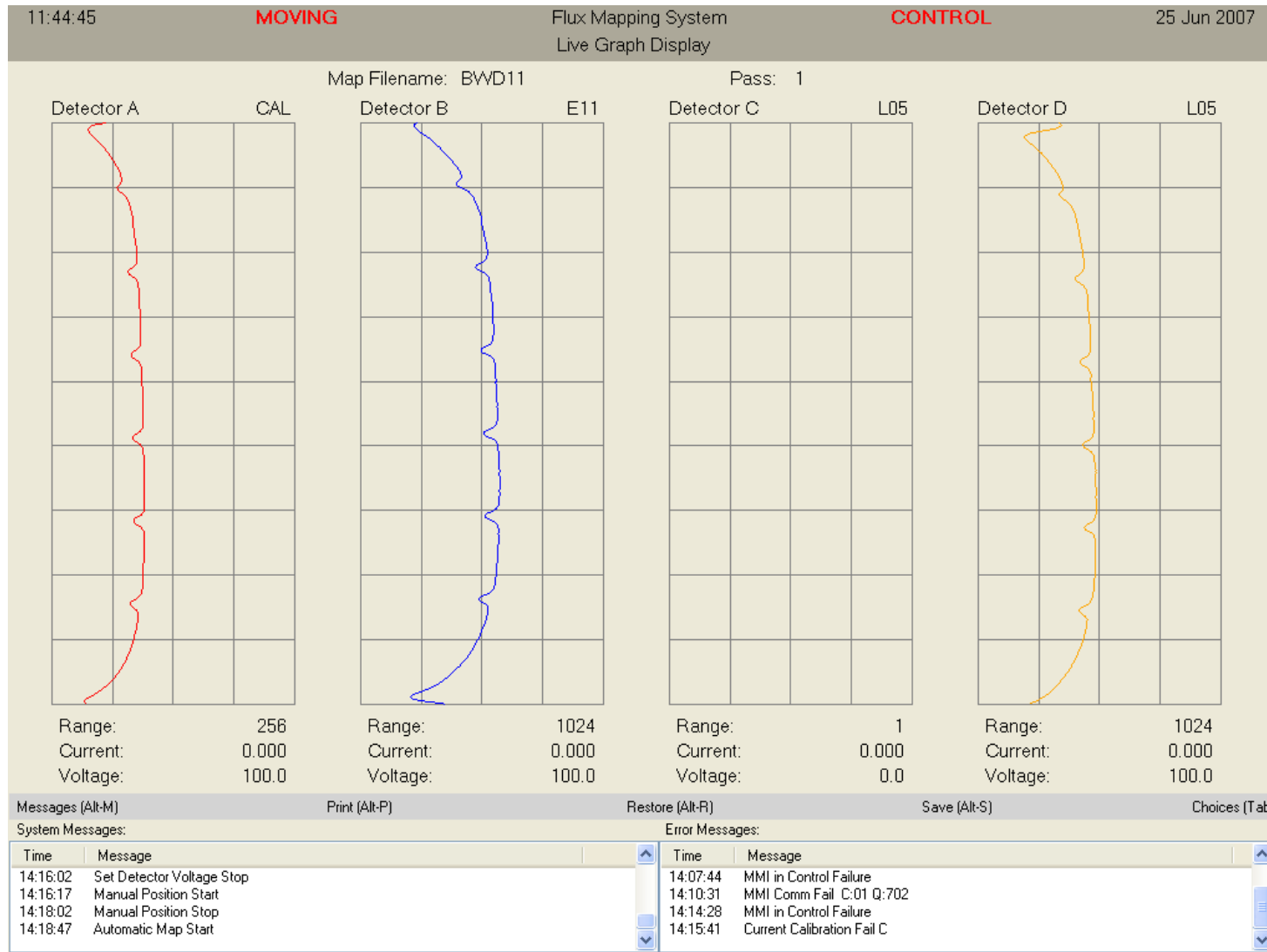
Thimble tubes



What?



What?



Benefits



chartered
management
institute

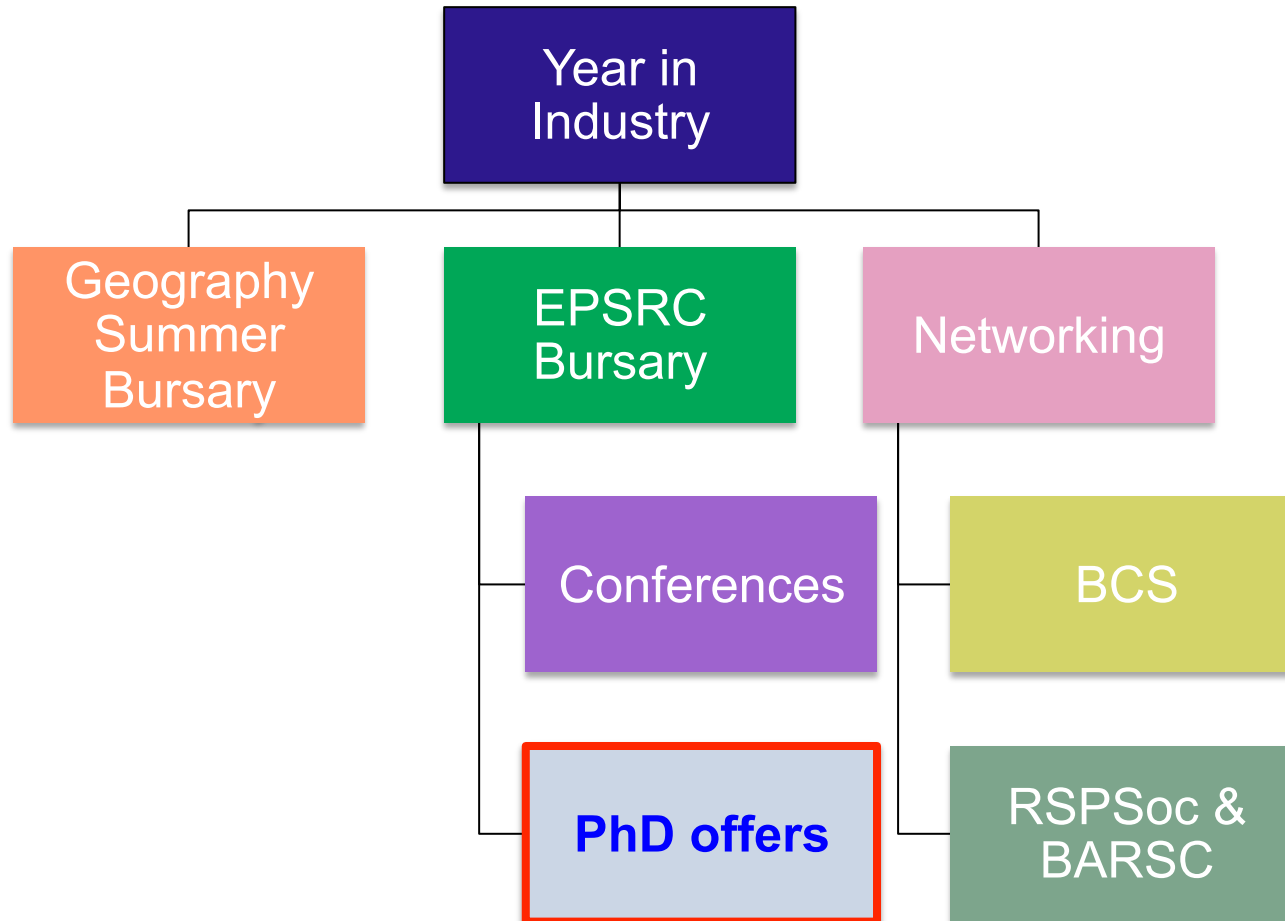
inspiring leaders



Stand out from the crowd!



Other opportunities I gained



Undergraduate Degree



Robin Wilson, future university lecturer

One new graduate set to make waves in the academic world of geography is Robin Wilson, who graduated in July with a first-class geography BSc from the

University of Southampton, achieving the highest mark in his year. He has recently presented his dissertation work at a conference, and has submitted a paper based on it to another.

But he almost opted to study computer



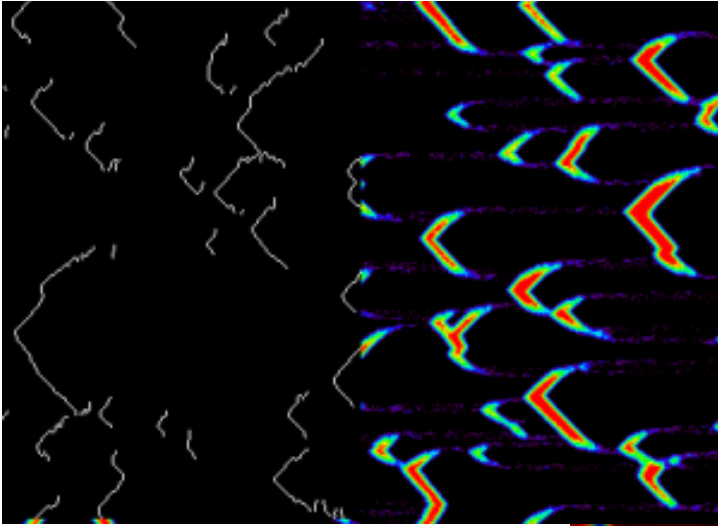
RGS-IBG Quantitative Methods
Research Group

Highly Commended

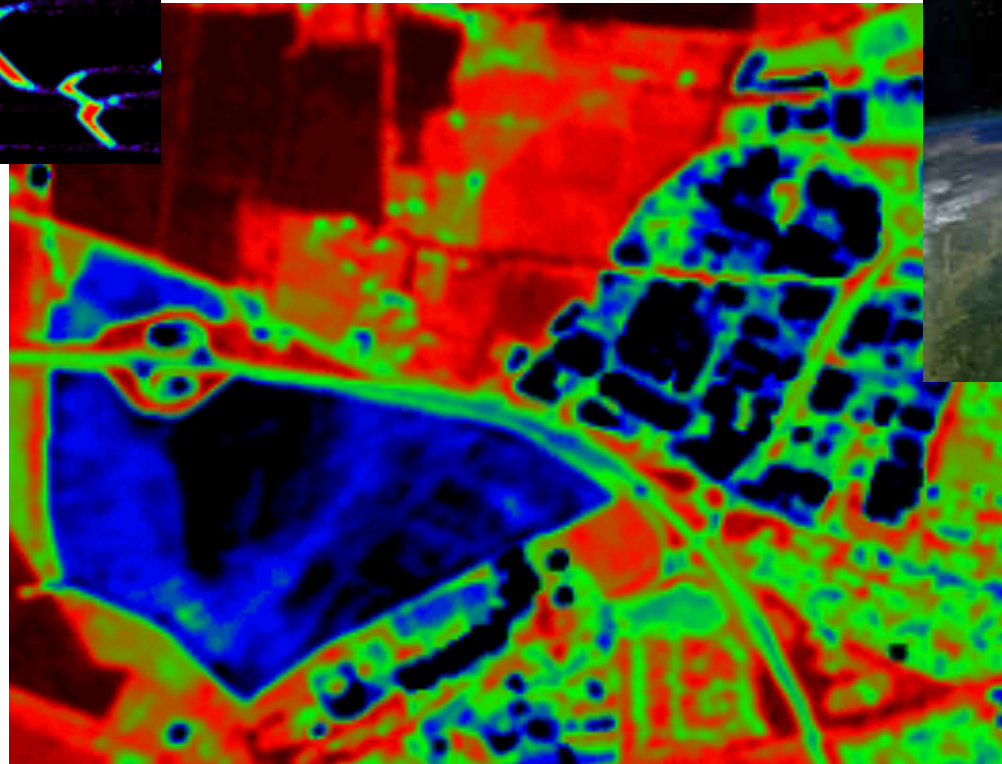
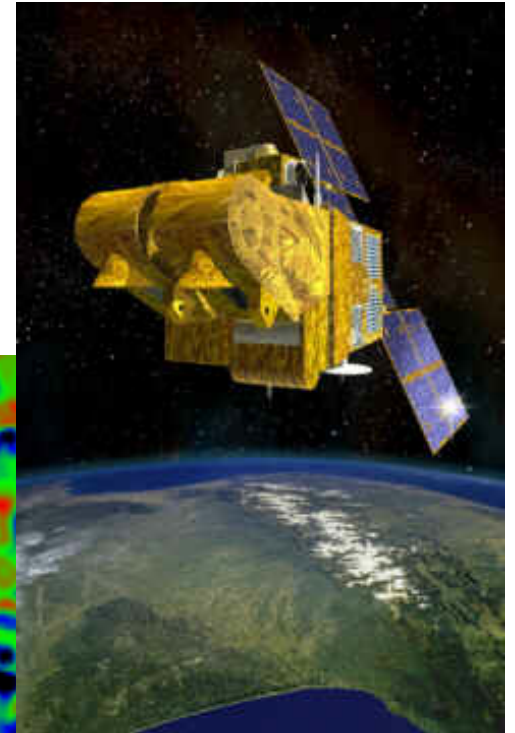
Now

The Year
in Industry
EDT

British Energy 



www.rtwilson.com/academic
robin@rtwilson.com



Now



For more information visit us at:

www.yini.org.uk

or talk to me afterwards